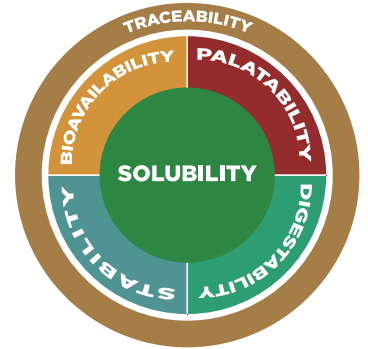


THE ABILITIES OF INTELLIBOND TRACE MINERALS

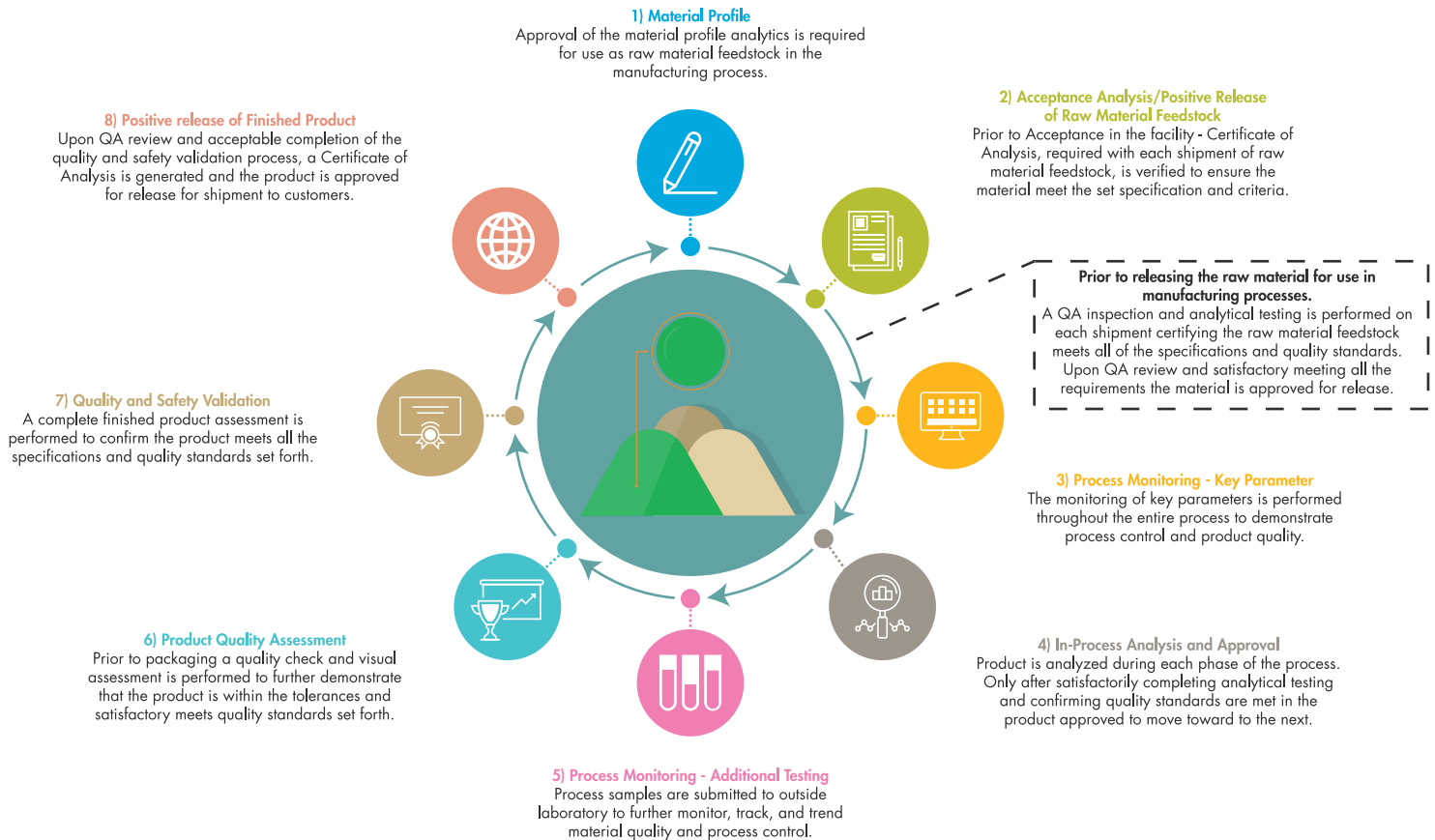
TRACEABILITY

Trace Minerals and the accountability of Traceability

- Traceability is the ability to trace the history of a specific production lot.
- History of a production lot includes identifying the origin of raw materials, the processing conditions of the production lot, results of raw material and final product test analysis, source and origin of packaging, and the customers to whom the production lot was distributed.



INTELLIBOND QUALITY CYCLE



CERTIFICATION PROGRAMS



SRI ISO 9001

Quality Management System standard designed to ensure customer needs are met in addition to meeting statutory and regulatory requirements related to the product. Certification cycle – 3 years. 1 Certification audit/2 Surveillance audits



FAMI QS

European code of practice for animal feed ingredient operators. Ensure feed safety by : minimizing the risk that unsafe ingredients enter the food chain, enable the operator to implement the objectives of the Feed Hygiene Regulation, and provide a measure to ensure that other feed safety regulatory requirements are met. Only program focused on specialty feed and their mixture ingredients. Certification cycle – 3 years. 1 certification audit/2 surveillance audits



HACCP

Hazard analysis and critical control point. A systematic preventive approach to food safety from biological, chemical and physical hazard in production process that can cause finished product to be unsafe. Science-based, step-wise process that identifies hazards starting at the beginning of the process through the process steps to the final product and shipping and installs preventive measure to eliminate or reduce the hazard in food. Proactive rather than reactive risk-based process. Audit cycle- Annual re-certification.



SQF

Safe quality food. Food safety code for manufacturing, manufacture of animal feed, good manufacturing practices for animal feed production. Annual re-certification audit with an excellent or good rating.



ISO 17025:2017

Laboratory testing certification demonstrates laboratory testing conforms to the general requirements for competence in laboratory environment. Certification cycle – 3 years/surveillance audit annually.